



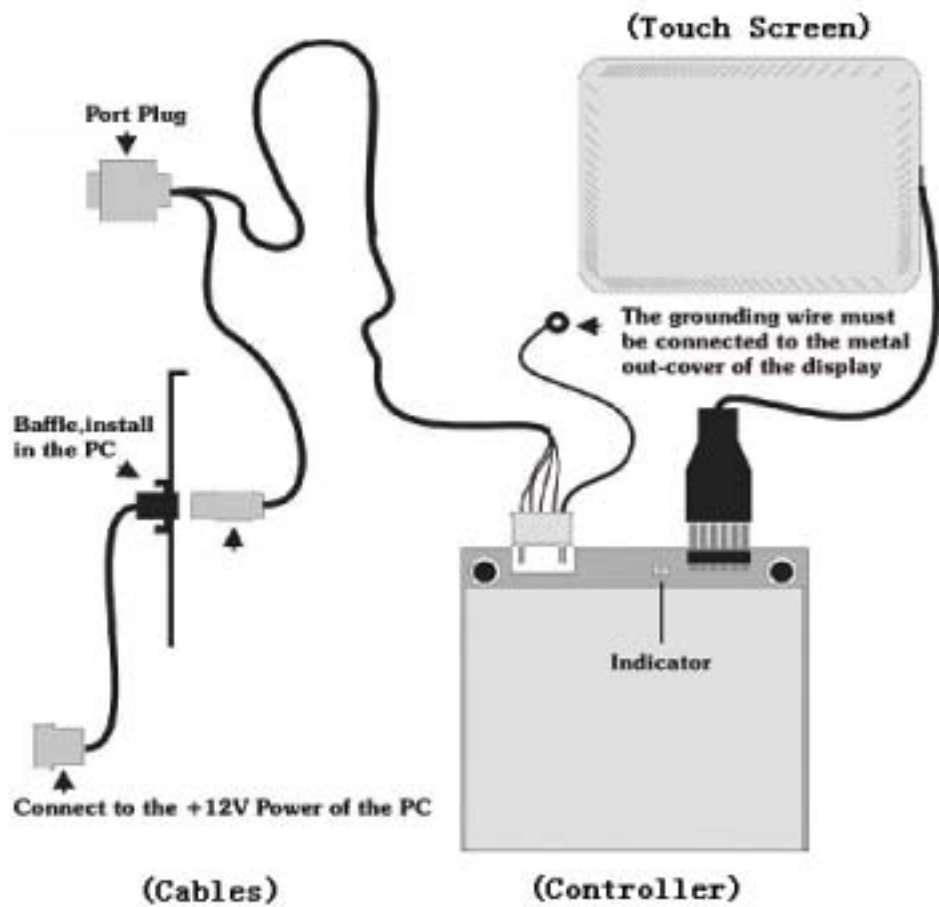
**GENERALTOUCH TOUCHSCREEN**

# **User's Manual**

[HTTP://WWW.generaltouch.com](http://www.generaltouch.com)

**Generaltouch Technology Co.,Ltd**

## Connecting TOUCHSCREEN Devices



- 1) Connect the power cable of the TOUCHSCREEN to the port of the host computer's power supply;
- 2) Connect one end of the signal cable to the port of the computer (Serial port or USB);
- 3) Connect the other end of the signal cable to the jack on the controller;
- 4) Connect the signal cable of TOUCHSCREEN to the plug of the controller.

## **Driver Installation of the TOUCHSCREEN (Driver for win9X)**

- 1) Insert the disk into floppy drive;
- 2) Double click to open folder *dirver for win9X*;
- 3) Double click to open file *Setup.exe*;
- 4) Click "*yes,go next*";
- 5) Choose one port of the computer connected and click "*next*";
- 6) Click "*yes,reboot now*" to restart the computer and touch driver program is loaded.

## Calibration of the TOUCHSCREEN

- 1) After successful installation of the driver, the system will automatically enter the calibration interface when the computer is rebooted for the first time, and then click "*Calibrate*";
- 2) Click the center of the bull's eye cross with finger according to the prompt;
- 3) Click "Confirm" to complete the calibration;

**Notice :** Re-calibration is required if the following changes occur:

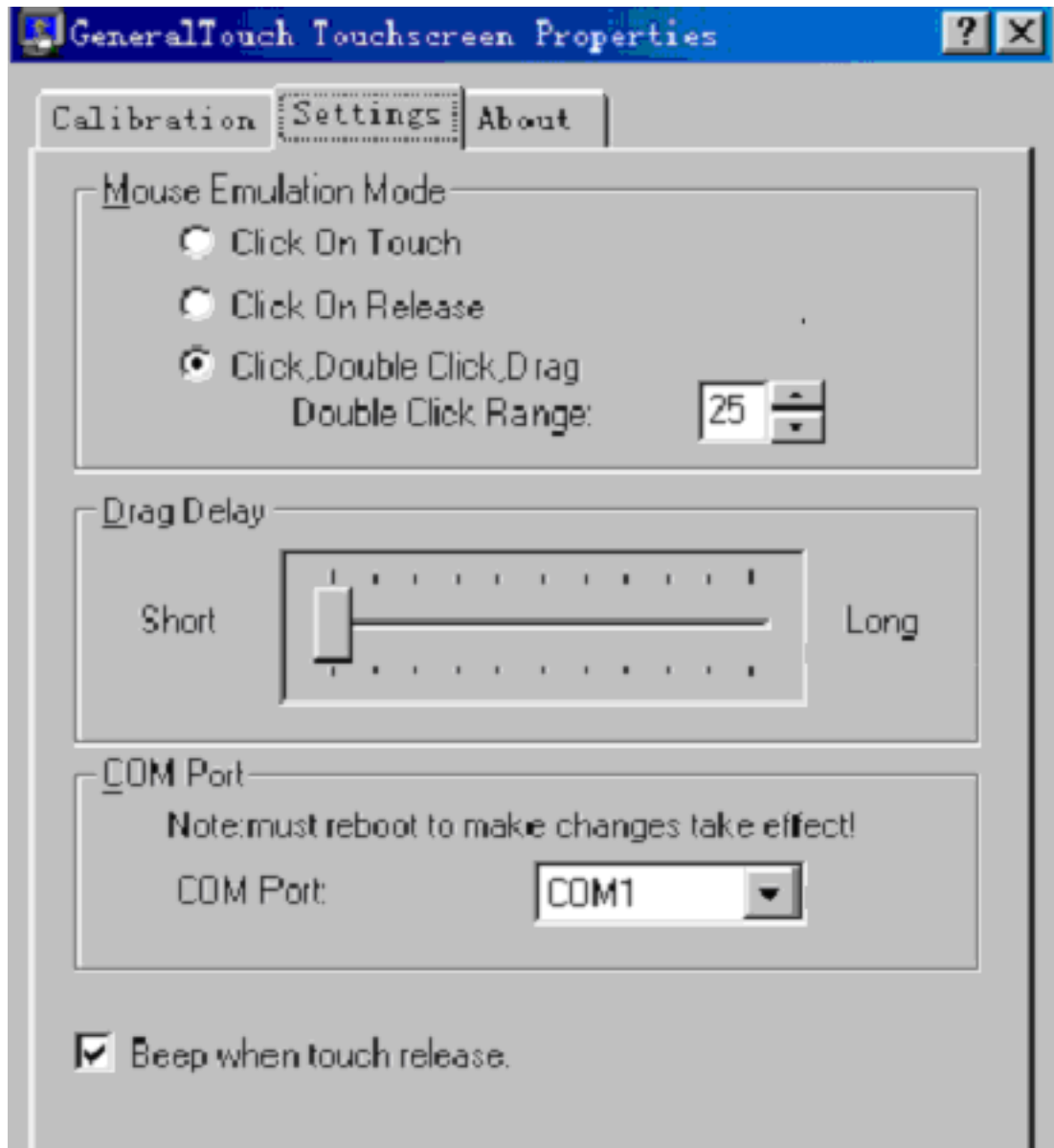
- 1 . Change of monitor's resolution
- 2 . Change of touchscreen or controller
- 3 . Change of computer or monitor
- 4 . After cleaning the dust

Enter Touchscreen calibration program through the following programme

- 1) Click "*Start*"— "*Setup* "— "*Control board* "— "*GeneralTouch touchscreen*";
- 2) Click "*Calibrate*";
- 3) Click the center of the bull's eye cross with finger according to the prompt;
- 4) Click "Confirm" to complete the calibration.

## Setup of the Touchscreen Parameter

Click “Touchscreen” in “Control panel”. Working mode of the TOUCHSCREEN can be modified on General label in the interface shown thereafter.



### Working Mode ( mouse emulation mode )

*click on touch* indicates the response when your finger touches on the panel.  
*click on release* indicates the responses when your finger leaves the touch panel.  
*click, double click, drag* support click and drag simultaneously, while *double click range* indicates the double click area , the unit is pixel.

### Drag Delay

Time delay of the dragging

### Serial Port Selection ( com port )

Choose the serial port of the TOUCHSCREEN to be connected with the computer and the computer should be rebooted to make the change take effect.

#### **Beep when Touch Release**

If it is chosen, the speaker on the computer will generate voice when touching.

#### **Uninstalling the Driver for the TOUCHSCREEN**

**Warning :** Only after the old version driver is uninstalled, should the new one be installed successfully.

Click **"Start " — "Setup " — "Control Board" — " Add/Delete Program "—**under which choose **"Install/Uninstall "**and click **"RS-232 , AcousticWave TouchScreen"—** click **"Add/Delete "**.

Reboot the computer after uninstalling according to the prompt.

# Troubleshooting Guide

## Steps for Malfunction Analysis :

- 1 . Make sure that all cables are well connected without any loose contact especially make sure that the connector plug and grounding wire of the controller are well connected.
- 2 . Check the status of the indicator on the controller. ;  
Working Status of the indicator on Controller (For the location of the indicator, please refer to the connection Fig. of TOUCHSCREEN devices.)  
Indicator keeps extinct after lighting temporarily (for about 1 to 2 seconds), and keeps lighting on touch while be extinct on release.
  - 1 ) Indicator keeps flickering;
  - 2 ) Indicator keeps extinct.If the indicator stays at status 1 and does not respond when touching, it indicates that serial port goes wrong or serial port is not connected correctly.  
If indicator stays at status 2, touch panel or controller is damaged, please contact us or our distributor.  
If indicator stays at status 3, the input of power supply of the controller goes wrong. Please check the circuit connection, especially the connection between the baffle and the internal power socket of the host. Check the power supply of the host for confirmation.
- 3 . Driver for Windows is installed correctly or not.
4. Make sure whether the serial port is properly selected or not.
- 5 . Confirm whether there is collision between devices in the computer and the serial port or not.

For example, default IRQ of some network card is 3 after the installation is finished, which will collide with that of COM2. Thus IRQ of the network card should adopt the idle one.

## Dust

As acoustic wave is distributed on the whole surface of the SAW TOUCHSCREEN in operation, If the touchscreen is not cleaned for a long time thus to accumulate so much dust to block off the reflective stripes, it will partially or completely lose touch effect.

### **Solution :**

Wipe off the dust on the reflective stripes around gently with business card or papernote through the gap between front cover of the screen and TOUCHSCREEN, then restart the computer.

## **Grounding Issue**

If controller is not well grounded, the internal working electric field will be affected. As a result, TOUCHSCREEN may lose touch effect completely, indicating pointer of the mouse may flutter or the TOUCHSCREEN may partially lose touch effect. Please make sure that the controller is grounded reliably.

## **Shut down the setup for Environmental Protection /Energy Saving**

We propose to shut down the setup of screen savers, energy saving and the setting for power supply management on the main board.